

International
Comprehensive
Innovative
Independent
Experienced
Flexible
Practical

RISK MANAGEMENT Services

Risk Management Intercontinental Pty Ltd



RMI

CONSULTING, AUDITING, TRAINING

OUR MISSION

Risk Management Intercontinental Pty Ltd is committed to providing a consistently high level of service and quality. We adopt ethical business practices, use innovative techniques and provide practical solutions. Our aim is to value-add and establish long term relationships by encouraging, motivating and empowering our clients.

OUR SERVICES

Our Risk Management and Audit Services include:

ENTERPRISE RISK MANAGEMENT

- Development and implementation of enterprise risk management systems
- Facilitation of risk management workshops
- Risk management plans
- Business continuity planning
- Integrated management systems
- Risk and assurance audits

PROJECT RISK MANAGEMENT

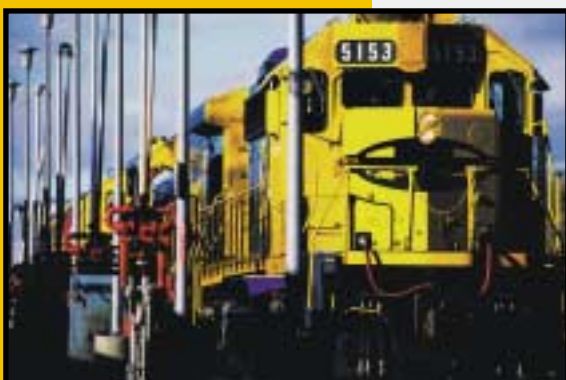
- Project feasibility risk reviews
- Facilitation of risk management workshops
- Development of project risk management plans

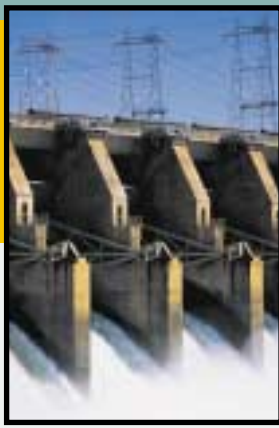
MAJOR HAZARDS MANAGEMENT

- Process safety management systems
- Hazop studies, including control systems
- Quantitative risk assessment studies
- Specialised techniques : fault tree, event tree, bow tie, SIL, LOPA, FMEA
- Fire safety studies
- Preparation of safety cases
- Emergency planning

WORK HEALTH AND SAFETY

- Health and safety management systems
- Workplace risk assessments
- Risk management plans
- Chemicals management
- Emergency planning
- Occupational hygiene studies
- Safety systems and compliance audits





ENVIRONMENTAL MANAGEMENT

- Environmental management systems
- Environmental risk assessments
- Integrated safety and environmental management systems

AUDITING

- Compliance audits
- Management systems audits
- Auditing of risk management plans
- Cyanide Code audits

TRAINING

- Risk management systems
- Risk assessment
- HAZOP
- Quantitative risk analysis techniques:
 - Fault tree analysis
 - Event tree analysis
 - Bow Tie analysis
 - LOPA
 - SIL analysis
 - FMEA



INDUSTRY SECTORS

RMI provides services to Public and Private Sector clients in a range of industries including:

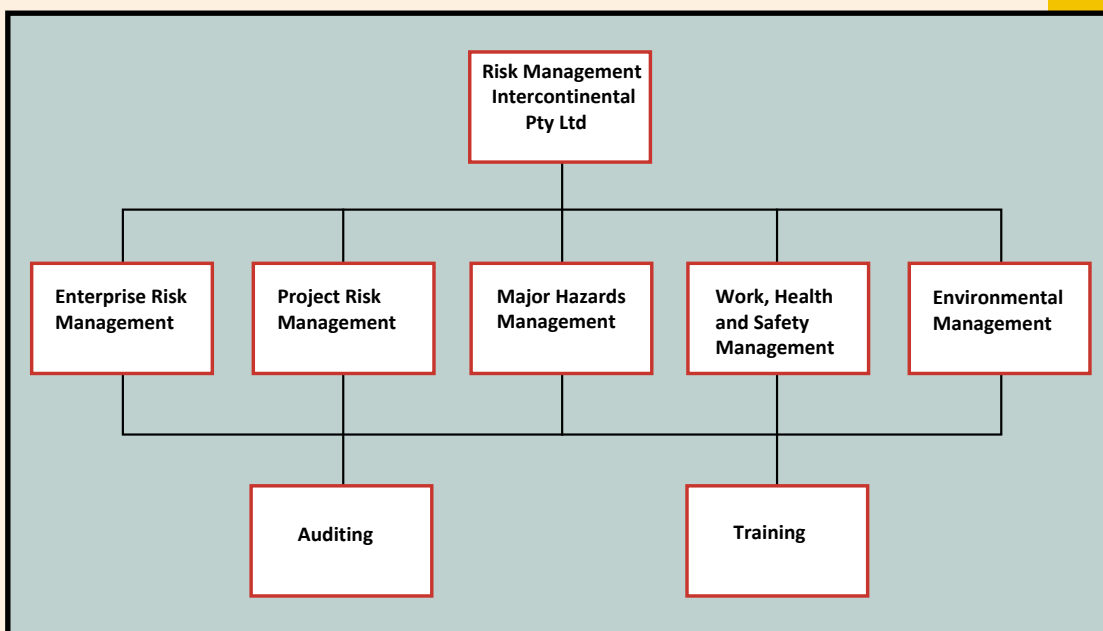
- Mining - opencut and underground
- Oil and gas - upstream and downstream
- Infrastructure and asset management
- Projects
- Marine and ports
- Railways
- Water
- Construction/ construction materials
- Power generation



ABOUT RMI

Established in 1995, Risk Management Intercontinental Pty Ltd (RMI) is a leading, specialist risk management consulting organisation, providing services to a wide range of sectors. RMI has completed numerous projects in the Oil & Gas, Mining, Construction, Transport, Manufacturing and Service industries throughout Australia, Pacific Rim, South-East Asia, Europe, Africa, North and South America.

RMI AT A GLANCE



RMI

RISK MANAGEMENT INTERCONTINENTAL Pty Ltd

PO Box 2339, ASCOT
BRISBANE, AUSTRALIA, 4007.

Phone +61 (0)419734284

Email office@rmipl.com.au

ABN 26 895 061 298

Jan 2022