

International  
Comprehensive  
Innovative  
Independent  
Experienced  
Flexible  
Practical

# **RISK MANAGEMENT** Services

Risk Management Intercontinental Pty Ltd



**RMI**

CONSULTING, AUDITING, TRAINING

## OUR MISSION

*Risk Management Intercontinental Pty Ltd is committed to providing a consistently high level of service and quality. We adopt ethical business practices, use innovative techniques and provide practical solutions. Our aim is to value-add and establish long term relationships by encouraging, motivating and empowering our clients.*

## OUR SERVICES

Our Risk Management and Audit Services include:

### ENTERPRISE RISK MANAGEMENT

- Development and implementation of enterprise risk management systems
- Facilitation of risk management workshops
- Risk management plans
- Business continuity planning
- Integrated management systems
- Risk and assurance audits

### PROJECT RISK MANAGEMENT

- Project feasibility risk reviews
- Facilitation of risk management workshops
- Development of project risk management plans

### MAJOR HAZARDS MANAGEMENT

- Process safety management systems
- Hazop studies, including control systems
- Quantitative risk assessment studies
- Specialised techniques : fault tree, event tree, bow tie, SIL, LOPA, FMEA
- Fire safety studies
- Preparation of safety cases
- Emergency planning

### WORK HEALTH AND SAFETY

- Health and Safety management systems
- Workplace risk assessments
- Risk management plans
- Chemicals management
- Emergency planning
- Occupational hygiene studies
- Legal opinions/expert witness
- Safety systems and compliance audits







## ENVIRONMENTAL MANAGEMENT

- Environmental management systems
- Environmental risk assessments
- Integrated safety and environmental management systems
- Auditing environmental management systems

## AUDITING

- Compliance audits
- Management systems audits
- Auditing of risk management plans

## TRAINING

- Risk management systems
- Risk assessment
- HAZOP
- Quantitative risk analysis techniques:
- Fault trees, event tree analysis
- Bow Tie analysis
- LOPA, SIL analysis
- FMEA
- Human factors



## INDUSTRY SECTORS

RMI provides services to Public and Private Sector clients in a range of industries including:

Mining - opencut and underground  
Oil and gas - upstream and downstream  
Infrastructure and asset management  
Projects  
Marine and ports  
Railways  
Water  
Construction/ Construction materials  
Power generation

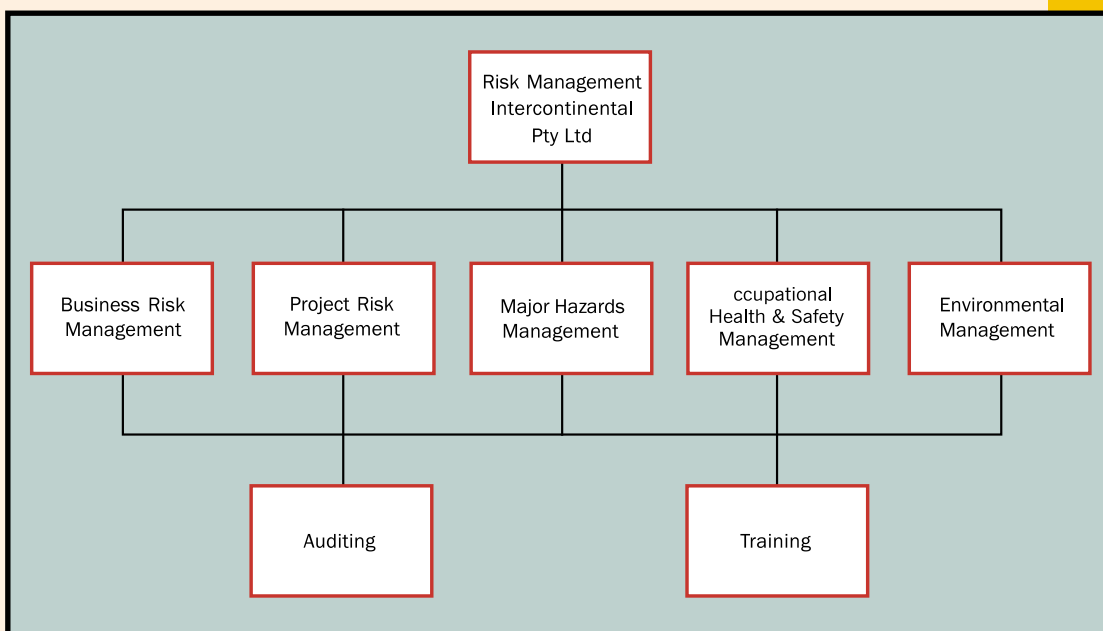


## ABOUT RMI

Established in 1995, Risk Management Intercontinental Pty Ltd (RMI), is a leading specialist risk management consulting organisation, providing services to a wide range of sectors. RMI has completed numerous projects in the Oil & Gas, Mining, Construction, Transport, Manufacturing and Service industries throughout Australia, Pacific Rim, South-East Asia, Europe, North and South America.

RMI operates a quality management system based on the requirements of AS/ISO 9001.

## RMI AT A GLANCE



**RMI**

**RISK MANAGEMENT INTERCONTINENTAL Pty Ltd**

**PO Box 2339 ASCOT AUSTRALIA 4007**

**Phone +61 7 3256 2444**

**Fax +61 7 3262 4333**

**Email [office@rmipl.com.au](mailto:office@rmipl.com.au)**

**ABN 26 895 061 298**

**Jan 2015**